

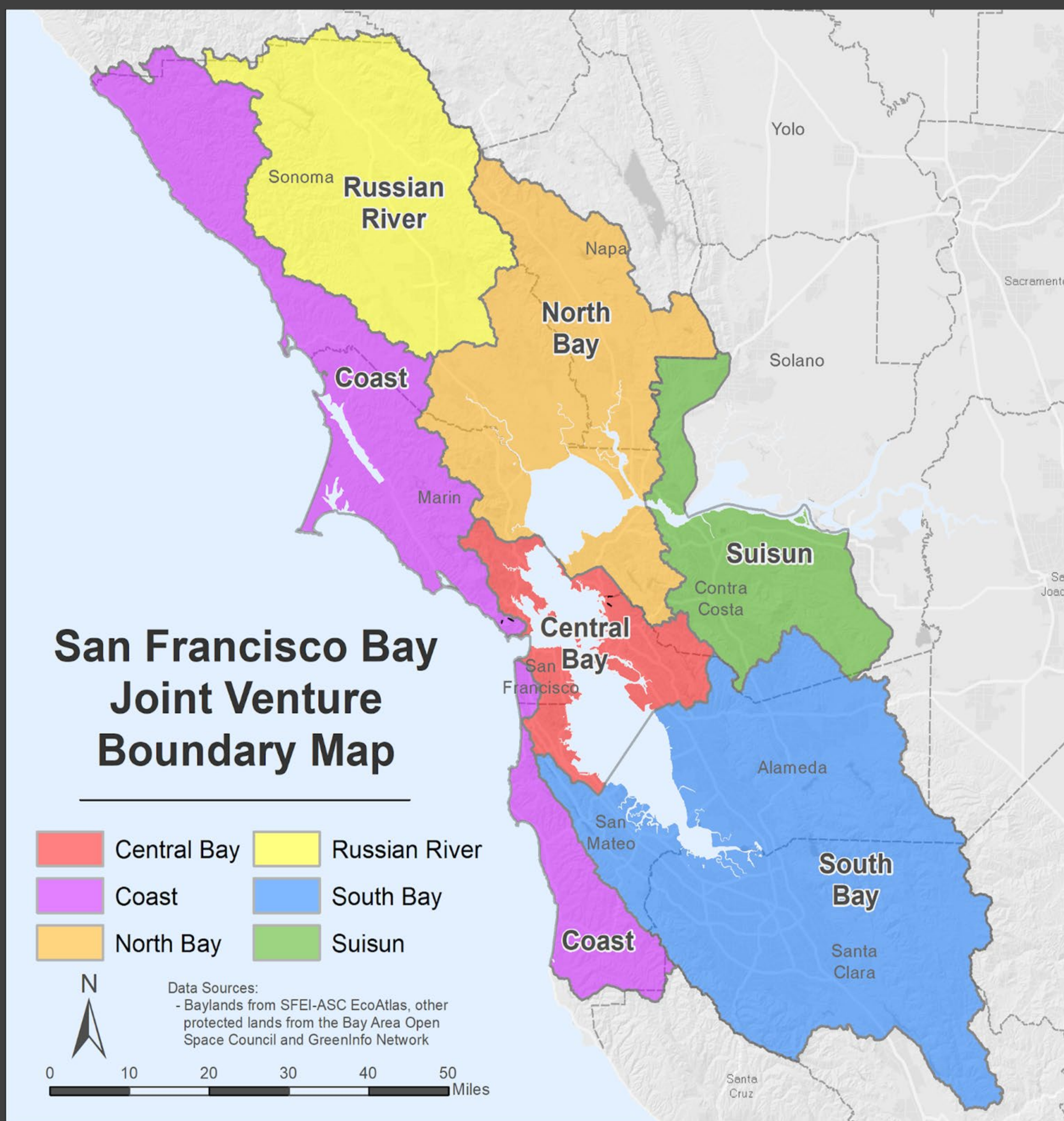
San Francisco Bay Joint Venture

Looking Forward: Conservation Goals for the San Francisco Estuary

Nikki Roach, Sandra Scoggin, and Jemma Williams

The San Francisco Bay Joint Venture (SFBJV) is part of the Migratory Joint Venture Program, a federally-funded cooperative partnership program that works to conserve habitats across the North American continent. Our partnership works to protect, restore, and enhance critical habitats for the benefit of birds, other wildlife, and people.

The SFBJV has created a new strategy that lays the framework for implementing projects founded on nature-based solutions and building climate resilience. Our ambitious strategy highlights specific habitat and waterfowl goals that address SFBJV priorities and state and federal 30 x 30 goals. We identify that a 14-fold acceleration in conservation efforts is needed to meet these goals.



RESTORING THE Estuary

To Benefit Wildlife and People

A Framework for the Restoration of Wetlands and Wildlife in the San Francisco Bay Area

2022 Implementation Strategy of the San Francisco Bay Joint Venture

Priority	Strategy
Conservation	Protect, enhance, restore, and adaptively manage habitats.
Scientific Foundation	Use science to inform habitat conservation actions, guide policy, and identify funding/research needs.
Communications	Engage in the storytelling of SFBJV, partners, and projects to support the partnership.
Coordination	Coordinate implementation of federal, state, and regional conservation plans and projects.
Collaboration	Provide formal or informal regional forums to facilitate collaboration.
Funding	Increase funding for SFBJV programs and partners.
Proactivity	Identify and address emerging issues and barriers to conservation.
Monitoring	Conduct regional and project-specific monitoring to guide decision making and adaptive management tools.
Climate Change	Ensure that protected and restored habitats are resilient to climatic threats.
Equity	Ensure that our work contributes to a more environmentally just and equitable future.

Implementation Strategy Estuary Acreage Goals			
Habitat*	Protect (acres)	Restore (acres)	Enhance (acres)
Non-tidal Wetlands and Waters	59,000	NA	27,000
Tidal Marsh		72,000	11,000
Estuarine-upland Transition Zone	16,500	15,100	2,500
Adjacent Uplands	14,000	NA	NA

*Additional info on the estuary (beaches, tidal flats, submerged aquatic vegetation, and shellfish beds) and non-estuary habitats are included in Chapter 2 and Appendix A of our Implementation Strategy.

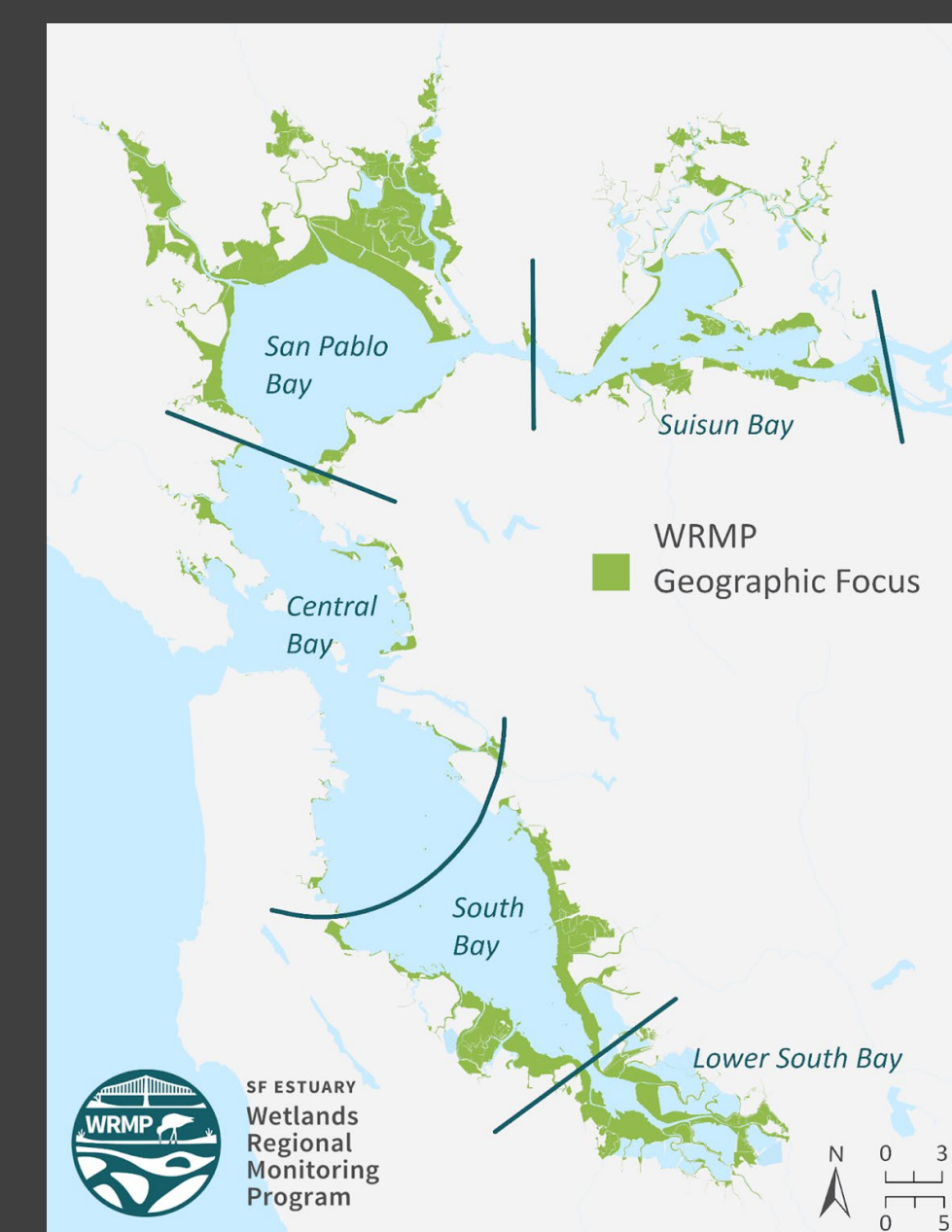
Ongoing Regional Projects



Habitat Projects throughout the region

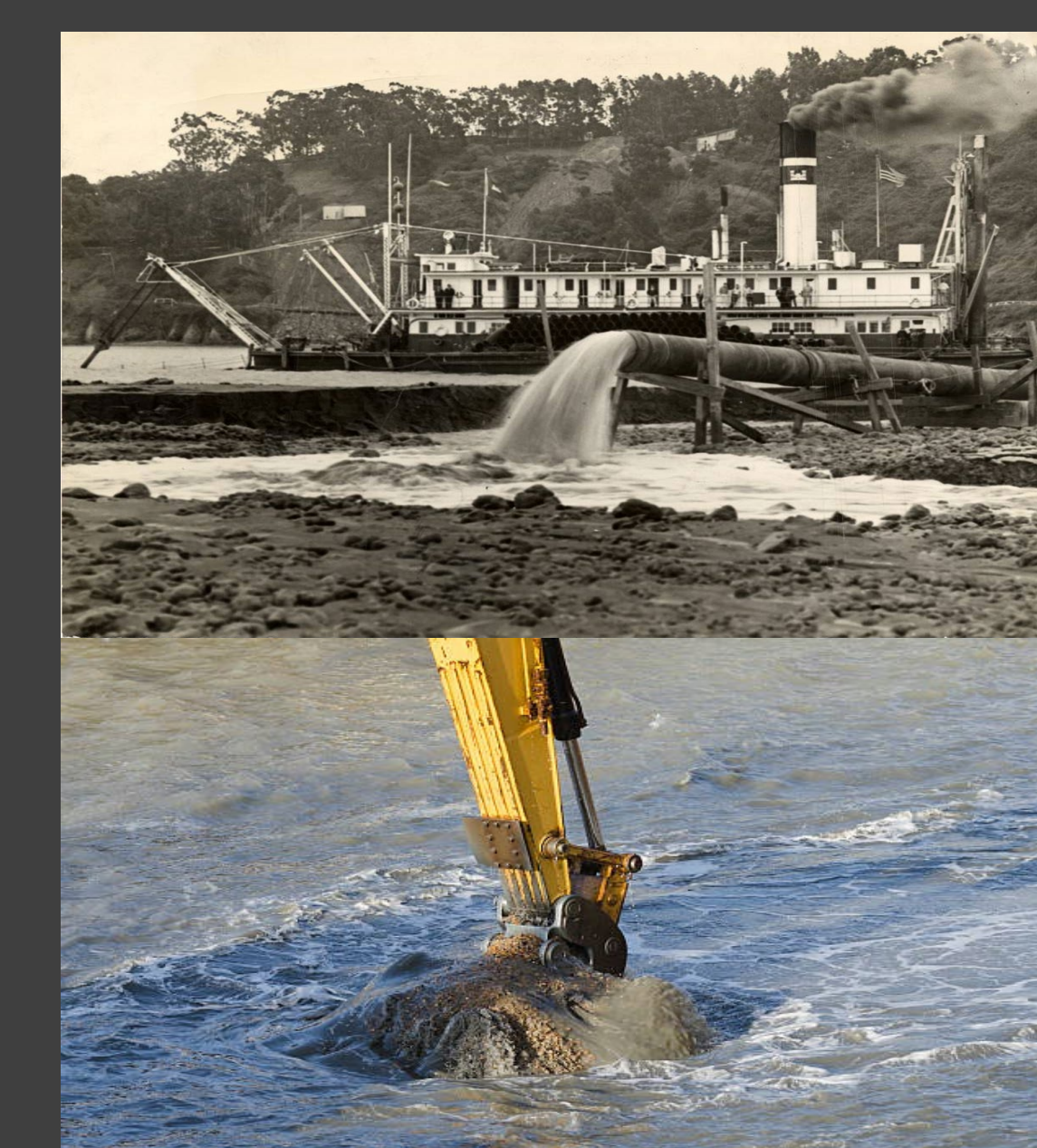
Including:

- Cullinan Ranch
- South Bay Salt Ponds
- Bel Marin Keys



Wetland Regional Monitoring Program

A coordinated monitoring program to answer key questions about wetland and shoreline health



Beneficial Sediment Reuse

Sediment placement to accelerate restoration will improve climate resiliency. We work on strategies to increase beneficial reuse of sediment.